

AMERICAN SOCIETY OF SAFETY ENGINEERS

GREATER CHICAGO CHAPTER NEWSLETTER



NOVEMBER 2005

2005-2006 Executive Committee

President: Al Borzych
Phone: 630-705-4600 ext. 7184
Email: aborzych@roman.com

Vice President: Maribeth Anderson *
Phone: 773-894-7065
Email: manderson@ohare.com

**2nd Vice President:
Sanobeia C. Brima**
Phone:
Email: sLchristmas@hotmail.com

Treasurer: Jim Smith
Phone: 708-450-3270
Email: jsmith@alberto.com

Secretary: Adrienne Bolbot
Phone: 773-695-5213
Email: abolbot@truevalue.com

Delegate: Marion Synowiec *
Phone: 312-381-3979
Email: Marion_Synowiec@ars.aon.com

Delegate: Linda Rhodes *
Phone: 312-432-7083, ext.7208
Email: lrhodes@transitchicago.com

**Newsletter :
Leslie Batterson ***
Phone: 312-558-8411
Email: leslie.batterson@saralee.com

**Financial Secretary: Milton
Vicenteno**
Phone: 773-745-2247
Email: milton.vicenteno@effem.com

Awards & Honors: Dawn Boisvert *
Phone: 773-330-0723
Email: dawnboisvert2003@yahoo.com

Programs: Allan Kaufman
Phone: 773-279-2308
Email: allank@alc-net.com

Governmental Affairs: Todd Macumber
Phone: 312-627-6486
Email: Todd.A.Macumber@marsh.com

Membership: Mary Abbatacola
Email: mary.abbatacola@effem.com

Historian: David Berg *
**Management Practice Liaison: Rich
Moscato ***
**Construction Practice Liaison: Paul
Kendall ***

* Denotes Past Chapter President

REMEMBER TO VISIT OUR
WEBSITE AT:
WWW.ASSECHGO.ORG
OR LINK TO US
FROM THE
NATIONAL WEBSITE AT:
WWW.ASSE.ORG

NOVEMBER 8, 2005 MONTHLY MEETING: “MANAGING FLEET SAFETY - BEST PRACTICES” BY JOE MCKILLIPS

Mr. McKillips will be presenting on techniques and best practices to be used for managing your Fleet Program. His presentation will offer good best practices techniques and ideas to enhance and manage your current program or assist in developing your new program. He has been a featured presenter at the National ASSE Professional Development Conference and we welcome him to the Greater Chicago Chapter.

Joe McKillips serves as Manager, Commercial Program Support for Abbott. During his 15-year career with Abbott, headquartered in north suburban Chicago, Mr. McKillips has provided safety & health leadership and technical support to a wide variety of personnel, throughout the manufacturing, R&D and commercial sales and service arena. His experience includes special emphasis in the areas of fleet safety, process safety management and loss prevention.

In his current position, Mr. McKillips' primary role is to provide management leadership and direction to the Corporation's ~23,000 commercial sales and service representatives throughout the world.

Mr. McKillips is a Certified Safety Professional, a member of the Northeast Illinois Chapter of the ASSE, and a participating member of the ANSI Z-15 Accredited Standards Committee on Safe Practices for Motor Vehicle Operations. McKillips is a graduate of the University of Wisconsin-

Whitewater and holds a bachelor's degree in Occupational Safety & Health.

Meeting Information:

11:30 am	Registration
12:00 pm	Lunch
1:00 pm	Presentation
2:00pm	Executive Meeting

(all are welcome to attend the Executive Meeting)

Advanced Registration: \$20

Registration at the Door: \$25

Retired Members: \$10

Cucina Biagio Restaurant, 7313 W. Lawrence, Harwood Heights, IL (708-867-4641).

Directions: From Downtown, take I-90 West (toward O'Hare) to Harlem Avenue, exit South. Go approximately 3 miles to Lawrence, turn right (West) - on left side of street, about 1 block. RSVP to 773-894-7065, by November 7th and leave a message that includes your name, company name and phone number.

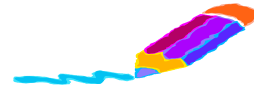
CONGRATULATIONS.....

Safety Recognition Awards were presented to two Greater Chicago Chapter Members at the Chicago O'Hare Exp on Wednesday, October 5, 2005.

Congratulations to both Linda Rhodes, CTA and to Leslie Batterson, Sara Lee Corporation on their prestigious awards for their contributions to Safety Leadership and Outstanding Service to the Greater Chicago Chapter of ASSE.

PRESIDENT'S REPORT

By: Al Borzych



Safety Professionals and Fraud Prevention:

Have you ever had that gut feeling that something is amiss in a Workers Compensation claim you are working on? This past year we had two and the "good guys" won. I am now facing another fraudulent case that will cost us a fortune in medical bills, therapy and lawyers fees. How can we stop false claims?

In all 20 to 25% of all Work Comp cases are fraudulent the remainder are preventable. Work Comp medical expenses are higher than employee benefit medical. Who's to blame? Scammers, schemers, unethical lawyers, medical providers, insurance industry and finally employers all for various reasons contribute to the rip-off.

There are many ways to solve this dilemma from diligent case management to educating employees about fraud and many more steps in-between. Stopping fraud will never happen because the scammers and schemers look just like you and me.

As always, Stay Safe. Al Borzych, President, Greater Chicago Chapter

NATIONAL ASSE OFFERS TWO TECHNICAL AUDIO CONFERENCE CALLS THIS MONTH

The implementation, maintenance, and improvement of SH&E programs are of significant importance to this country as the economy of the United States moves toward more of a global perspective. Such programs positively impact all Americans and specifically those who work at all levels of the public and private sectors in technology development, manufacturing, training, financial analysis, personnel, academia as well as the final end user. **"Business of Safety for the SH&E Professional"** will cover these important issues and explore a key question which is often asked of many SH&E Professionals by financial planners in business and industry: **Do safety and health management programs improve a company's bottom line?** The answer is a resounding "YES", although benefits may be somewhat hard to quantify. But in addition to outright savings on worker's compensation benefit claims, civil liability damages, and litigation expenses, having a solid safety and health management program with senior management commitment will improve productivity and employee morale. It can also make the difference between winning and losing bids and even government contracts.

SH&E professionals continue working on this issue and looking for more information. To address these issues, our featured speaker will be Mark Hansen, former **ASSE President** and current chair of the ASSE Business of Safety Committee, (BoSC). Mark is going to look at business and financial management issues and look at ways to increase awareness of the fact that sound SH&E investment strategies is a positive for the organization. The presentation will go approximately sixty minutes. Then, we'll open it up to Q&A for the rest of the program! **Details at <http://www.asse.org>. Save the date: November 17, 2005**

ASSE'S SEMINARFEST IN LAS VEGAS.....JANUARY 22-28, 2006

With 45 seminars ranging from one to three days in length, SeminarFest offers essential technical, management, and skill development topics for the Safety, Health, and Environmental professional. Whether you join us for one day or the full week, this event will not only satisfy your comprehensive continuing education needs but also give you insight on leading SH&E topics.

Here's How It Works SeminarFest 2006 offers 45 seminars in one location, the Flamingo Las Vegas. You may register for seminars as needed to complete training and earn up to 5.0 CEUs/COCs or 7.0 CM points. Each seminar is individually priced, and discounts are given as you increase the number of seminars you select. Please refer to the fee schedule on page 30 for details.

Go Beyond Quality Education Our special events create networking opportunities to help you make the most of your SeminarFest experience. Please refer to the center page of this brochure for a full schedule of networking opportunities, highlights include: Two receptions; Three complimentary lunches; two luncheon presentations

About The Location The Flamingo Las Vegas is a resort property centrally located on the Las Vegas strip. It has a variety of restaurants, a fully equipped fitness center with a full-service spa, four pools and complimentary parking. Visit www.asse.org for more registration and more information.

Is Your Name Really John Doe?

Safety professionals are often focused in on compliance with OSHA, DOT and EPA. However, in today's climate security is also becoming a responsibility for the safety person. Homeland Security threats, on-site security, disgruntled employees, and now identity theft and fraud are all areas you might be concerned with. We are moving into the holiday buying season, and the opportunity to steal someone's identity has become much easier. People are tending to do more on-line purchases using credit information. The internet opens up a whole new world for people and companies to uncover a great deal of personnel information about you. This article will focus on the identity issue, which can affect both you and your employees. The Department of Justice is working very hard to deal with this issue. In 1998, Congress passed the [Identity Theft and Assumption Deterrence Act](#) which gives the Federal Prosecutors the right to prosecute identity theft and fraud cases.

Do you know what these terms have in common; *shoulder surfing*, *dumpster diving*, *spamming*? These are all ways the people can find out personnel information about YOU.

Shoulder surfing is when a person stands behind or near you or watch you, as you input your private account and password into a visible computer such as an ATM machine. Other *Shoulder surfers* will listen to your open cell phone conversations where you give personal information over the phone such as a credit card number. I have ridden on an EL train in Chicago and have often heard people make airline and hotel reservations using a credit card, without even considering that other people can hear everything they say.

Dumpster diving is the term used for someone who goes through your garbage to find personal information you have thrown out. How many credit card applications do you get a month? A dumpster diver can retrieve that application, fill it out without you knowing and get a credit card in your name. You can now become responsible for paying the bills? Any piece of mail, with ANY personal information should be shredded or at least ripped into small pieces.

Spamming or *hacking* allows the criminal to get personal information when you use the internet. Recently hackers have been able to obtain large amounts of data from many companies such as the credit information from shoppers at DSW Shoe Warehouse. Over 300,000 shoppers had their credit information stolen.

What can you do to help prevent this? Ironically, the Department of Justice suggests the word **SCAM** as one way to take precautions against identity theft.

S Be **STINGY** about giving out your personal information to others unless you have a reason to trust them, regardless of where you are.

C **CHECK** your financial information regularly, and look for what should be there and what shouldn't be there. Is there any unusual activity which you cannot account for?

A **ASK** periodically for a copy of your credit report.

M **MAINTAIN** careful records of your banking and financial accounts.

What should you do in the case of identify theft? Contact your local state's attorney's office and local police. Contact the Federal Trade Commission. Under the [Identity Theft and Assumption Deterrence Act](#) , the [Federal Trade Commission](#) is responsible for receiving and processing complaints from people who believe they may be victims of identity theft, providing informational materials to those people, and referring those complaints to appropriate entities, including the major credit reporting agencies and law enforcement agencies. Call the fraud units of the three principal credit reporting companies; Equifax, Experian (formerly TRW) and Trans Union. Also, contact all your credit card companies and any companies where you submit payments.

I stated at the beginning of this article that safety professionals are becoming increasingly involved with security. Please share this information with your employees and anyone else you think might benefit for this. As we move into high shopping gear for the upcoming holiday season, let's try and make it as difficult as possible for anyone to steal anyone's identity. I hope you all have a wonderful and SAFE holiday season.

Allan Kaufman (Really), Director of The Compliance Resource Center, www.theCRCenter.com

GOVERNMENTAL AFFAIRS UPDATE

If you would like to get immediate email updates of the full text, please contact Todd Macumber, our Governmental Affairs Chairperson. He will add you to the email distribution of all of the latest recaps for both State and Federal, as they are made available.

Email: Todd.A.Macumber@marsh.com

OOPs...we goofed...Member Recognition....

- **CORRECTION:** Our own current President, Al Borzych has been appointed Deputy RVP for Region V (not ARVP). Sorry for the confusion.

PLEASE SEND NEWSLETTER STORIES, PROMOTIONS, SAFETY PHOTO'S, TECHNICAL ARTICLES OR IDEAS TO:

Leslie Batterson, Newsletter Editor
at leslie.batterson@saralee.com

WELCOME NEW MEMBERS

Welcome new members to the Greater Chicago Chapter of ASSE. We look forward to seeing you at an upcoming meeting.

Patrick Boyle, Material Service Corp
James S. Pae

ASSE'S NATIONAL MANUFACTURING SAFETY SYMPOSIUM—ATLANTA, GA

You're not just a safety professional...you are a **manufacturing safety professional**. Your business has special needs, different concerns and other perspectives that other SH&E professionals don't have. *This is your conference.* ASSE brings you the Manufacturing Safety Symposium. A two-day educational opportunity designed especially for the manufacturing safety professional.....**See www.asss.org for more**

UPCOMING MEETINGS

- | | |
|----------------------|--|
| December 13th | Rick Grobart, Gallagher Bassett Services, Inc.- "How to improve Safety Presentations" |
| January 10th | Marian Kelly from Prairie State College |
| February 14th | Mark Peterson, M.L. Sullivan Insurance Agency |
| March 14th | Underwriter's Laboratory Tour |
| April 11th | Dave Mertz from Burns & McDonnell "Electrical Safety" |
| May 9th | Linda Rhodes—Linda is working on assembling a panel of well-respected safety and industry professionals, prepare them to discuss "how to effect timely communicate safety expectations throughout an organization" and then allow the audience to direct questions to the panel. |